

TECHNICAL DATA SHEET

LU3S IP20 / Soffite

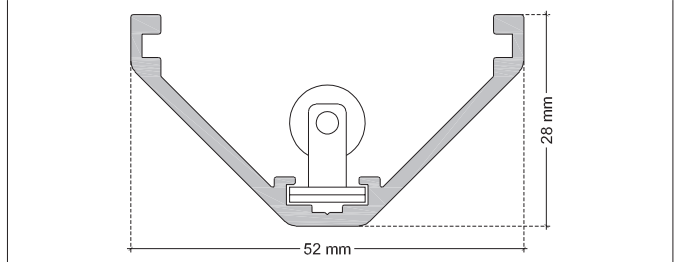
VERSION - 26.04.2016

STANDARD LUMINAIRE

Reference	LU3S
Protection Class	IP20
Lighting Source	Soffite
Connector	Festoon on B'Light conductor 16mm ²
Dimensions	52 x 28mm
Standard Length	330 - 670 - 1000 - 1330 - 1670 - 2000mm
Length on measure	on request up to 3000mm
Nb Lighting Unit	17 bulbs/m
Voltage	24V
Power	3W 5W 10W
	51 W/m 85 W/m 170 W/m
Connecting Cable	1m standard cable 2x2.5mm ²



LU3S / Soffite



FINISH

Color Finishing Profil

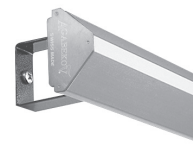
Standard	Natural Anodised Aluminium
On request	Thermo-Enameling Powder Coating RAL Color Anodising Polished Aluminium Chrome Aspect Polished Aluminium Old Gold Aspect

ON REQUEST

Fixation	ABA: Perpendicular Support ABS: 45° upward or downward support
Cover	VAS: Clear Glass / VOS: Opaline Glass (Soffite 5W Max.)
End Caps	EPA EPAR (for VAS/VOS Cover)
Connecting Plug	AMS / AF
Dimming Option	Phase 220V, Dali, KNX <i>Ask technical departement for more information</i>

ON REQUEST: LU3S Fixation - **NOT POSSIBLE WITH COVER**

ABA

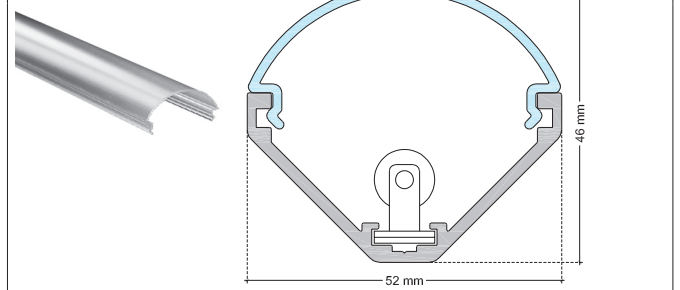


ABS



ON REQUEST: LU3S Cover - **SOFFITE 5W MAX.**

VAS/VOS



LIGHTING SOURCE

Lighting Source	Soffite Standard			Soffite Long Life	
	Glass	Clear or Frosted		Clear or Frosted	
Power	3W	5W	10W	5W	10W
Voltage	24V	24V	24V	24V	24V
Beam Angle	360°	360°	360°	360°	360°
Color Temperature	2400K	2500K	2600K	2600K	2700K
Light Output lm/unit	20lm	38lm	80lm	50lm	120lm
Lifetime	1'000h	1'000h	1'000h	3'000h	3'000h

ON REQUEST: LU3S End Caps

EPA



EPAR fot VAS/VOS Cover



CERTIFICAT



AGABEKOV



AGABEKOV SA Manufacture 6, ROUTE DE COMPOIS
CH-1222 VÉSENAZ - GENEVA - SWITZERLAND
Tel. +41 22 752 47 45 Fax. +41 22 752 37 08
E - mail: info@agabekov.com



AGABEKOV SA Bureau d'etudes 6, ROUTE DE COMPOIS
CH-1222 VÉSENAZ - GENEVA - SWITZERLAND
Tel. +41 22 752 47 45 Fax. +41 22 752 37 08
Internet: www.agabekov.com

